

SATA® adam 2™, SATA® adam 2 U™



German Engineering



Flexibly Digitized!



# SATA adam 2 – keeping the pressure under control

The accurate and correct setting of the gun inlet pressure is one of the key requirements to ensure perfect color match during the painting process. Whether the pressure is set too low or too high, color deviations will be the undesired result. The consequences are unnecessary rework disrupting the efficient work flow. "Incorrect inlet pressure" can be prevented by using SATA digital spray guns or the accessories SATA adam 2 and SATA adam 2 U.

## SATA adam 2

The SATA adam 2 is the compact retrofit solution for SATA spray guns: It consists of two components: The **SATA adam 2 dock** replaces the air micrometer of the spray gun and allows the quick and precise setting of the inlet pressure (+/- 0.7 psi). The respective high-precision measuring electronics is integrated in the **SATA adam 2 display**. It can be safely fitted to the "dock" and can be removed in no time at all – for example before cleaning the spray gun in a gun washing machine or to use the "display" on another spray gun with pre-mounted "dock".

The "docks" are separately available allowing to retrofit all your SATA spray guns. The big advantage: With one SATA adam 2 display only, your entire spray gun inventory can be cost-efficiently "digitalized". By the way: The "display" can be easily cleaned with a cloth soaked in cleaning agent.

## SATA adam 2 U (= Universal)

With the SATA adam 2 U, all other types of guns can be also digitized: The SATA dry jet blow gun as well as all spray guns of other makes. The adjustment screw on the side of the SATA adam 2 dock allows to set the pressure precisely.

## SATA dock

This retrofit unit offers even further options for digital pressure control: Combined with the SATA adam 2 display, it replaces any analog pressure gauge with G 1/8 male thread, e.g. on pneumatically operated systems or when upgrading an existing SATA air micrometer with analog pressure gauge #27771 as well as SATA filters to digital.



**SATA adam 2**  
(SATAjet X 5500,  
5000 B and  
SATAjet 5000 PHASER only)  
Part No. 211557 chrome



**SATA adam 2 black**  
Order No. 1031715

**SATA adam 2**  
for SATA spray guns  
except 5000 series &  
SATAmijet  
Part No. 160853 chrome



**SATA adam 2 black**  
Part No. 1031690

**SATA adam 2 mini**  
for SATAmijet 3, 4,  
3000 B & 4400 B  
SATAmijet 1000 K & H  
Part No. 160887 chrome



**SATA adam 2 mini black**  
Part No. 1031674

**SATA adam 2 U**  
Air micrometer G 1/4 with SATA  
adam 2 display for SATA dry jet  
and competitor spray guns  
Part No. 195222 chrome



**SATA adam 2 U black**  
Part No. 1031731



The SATA adam 2 displays the spray gun inlet pressure with an accuracy of +/- 0.7 psi.

## PRODUCT BENEFITS

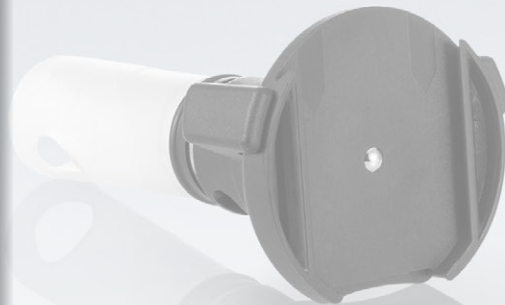
- To retrofit – Converts any non-digital spray gun to a "DIGITAL"
- Precise setting and display of the inlet pressure – ensures perfect color match
- Display can be attached and removed in no time at all
- Display can be used on several spray guns– thus, your entire spray gun inventory can be "digitized" cost-efficiently
- Extended battery lifetime, the battery can be replaced by the end-user

## Technical Data

Approval for use in explosive areas	II 2G Ex ia IIC T4 (KEMA 05ATEX1090X)	
Display accuracy	+/- 0.7 psi	
Max. operating pressure	150.0 psi	
Max. operating temperature	60° C / 140° F	
Weight	SATA adam 2 (mini)	45 g / 1.6 oz.
	SATA adam 2 U	100 g / 3.5 oz.
	SATA adam 2 U dock	70 g / 2.5 oz.



SATA adam 2 U – Allows to digitize SATA dry jet blow guns and competitor spray guns.




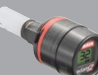







**SATA dock**  
with G 1/8 male thread to upgrade analog gauge, e.g. on pneumatically operated systems Part No. 195925



Upgrading an analog pressure gauge with a SATA adam 2 display with the help of a SATA dock (requires adapter from G 1/4 male thread to G 1/8 female thread, Part No. 677023)

For more information on SATA pressure measuring devices, please contact your SATA dealer or visit [www.satausa.com](http://www.satausa.com)

	SATAjet X 5500	SATAjet X 5500 PHASER	SATAjet 5000	SATAjet 5000 PHASER	SATAjet 4000	SATAjet 3000	SATAjet 1500 SolV	SATAjet 1000	SATAjet 100	SATAjet B, SATAjet GR	SATAminijet 3000	SATAminijet 4	SATA dry jet 2	Competitor spray guns	Retrofitting micrometer with pressure gauge #27771	Retrofitting atomisation air control gauge #4002
 <b>211557</b> SATA adam 2 complete	X	-	-	-	-	-	-	-	-	-	-	-	-	-	-	-
 <b>1031715</b> SATA adam 2 black complete	X	-	-	-	-	-	-	-	-	-	-	-	-	-	-	-
 <b>160853</b> SATA adam 2 complete	-	X	X	X	X	X	X	X	X	X	-	-	-	-	-	-
 <b>1031690</b> SATA adam 2 black complete	-	X	X	X	X	X	X	X	X	X	-	-	-	-	-	-
 <b>160887</b> SATA adam 2 mini complete	-	-	-	-	-	-	-	-	-	-	X	X	-	-	-	-
 <b>1031674</b> SATA adam 2 mini complete	-	-	-	-	-	-	-	-	-	-	X	X	-	-	-	-
 <b>195222</b> SATA adam 2 U	X	X	X	X	X	X	X	X	X	X	X	X	X	X	-	-
 <b>1031731</b> SATA adam 2 U black	X	X	X	X	X	X	X	X	X	X	X	X	X	X	-	-
 <b>195925</b> SATA dock with G 1/8 male thread	-	-	-	-	-	-	-	-	-	-	-	-	-	-	X	X

## Accessories/Spare Parts

**SATA adam 2 display**  
fits on all "docks"  
Part No. 160697



**SATA adam 2 dock**  
SATAjet 5000 series only  
SATA spray guns  
Part No. 211565  
Part No. 211573 (2x)



**SATA adam 2 dock**  
for "full size"  
SATA spray guns  
Part No. 160788  
Part No. 160796 (2x)



**SATA adam 2 black display only**  
Part No. 1031658  
For on all docks



**SATA adam 2 mini dock**  
or SATAminijet 3, 4,  
3000 B & 4400 B  
SATAminijet 1000 K & H  
Part No. 160861



**SATA dock**  
with G 1/8 male thread  
to upgrade analog gauge, e.g.  
on pneumatically operated  
systems  
Part No. 195925



**SATA adam 2 U dock**  
for SATA dry jet and  
competitor spray  
guns  
Part No. 195230



**Battery kit**  
for SATA adam 2  
display  
Part No. 160739



**Adapter**  
G1/4 to G1/8  
Part No. 677023



Your SATA dealer

# SATA

**SATA USA Inc.**

One Sata Drive • PO Box 46  
Spring Valley, MN 55975  
Phone: 800-533-8016  
E-mail: [satajet@satausa.com](mailto:satajet@satausa.com)  
[www.satausa.com](http://www.satausa.com)

Errors and technical alterations reserved - SATA, SATAjet and/or other SATA products referenced herein are either registered trademarks or trademarks of SATA GmbH & Co. KG in the U.S. and/or other countries.

47\_ SATA adam 2  
Printed in the USA  
22-0630